

Our Maintenance Measures



GX Outdoors supports our customers by recommending a range of appropriate and preventative maintenance steps.

A few simple measures will help maximise the life of your park furniture, particularly in extreme environments where the furniture is exposed to harsh or corrosive elements, strong direct sunlight or high ultra violet radiation, and vandal prone areas.

It's imperative that you determine early whether your site is exposed to any of these conditions so that the appropriate preventative maintenance be planned and undertaken.



General Park Furniture Maintenance	03
Timber Maintenance	04
BBQ Cleaning	07



General Park Furniture Maintenance

All of our furniture is engineered from high quality marine grade aluminium, with stainless fasteners and specially formulated hybrid coatings. It can take many years for corrosion to effect their structural integrity. However, extreme conditions will cause surface rust on the powder coated surfaces and on the stainless steel fastenings if the corrosive residue is not regularly washed.

Cleaning

Park furniture subjected to extreme conditions should be thoroughly washed down every month. An entire wash down will remove salt build-up, road grime and other extraneous matter, all of which can shorten furniture life.

Extreme cases should be washed with high pressure washers or hoses, taking particular care to flush out narrow gaps and ledges of any corrosive residue. The process should include an initial wash down with clean water - if required a pH free soap wash can be used in combination with warm water.

Note _ Do not use detergents or caustic cleaners/chemicals.

High UV Areas

Park furniture powder coated in bright colours should be placed in shady areas or under shelters in high UV areas. This will help prevent fading, warping and cracking.

Timber Maintenance

Australian premium hardwoods are a low maintenance timber and have a high durability rating. Nevertheless, timber is a natural product and exposure to harsh elements without the necessary routine maintenance will eventually cause weathering, warping, and cracking over time while assuming a light grey appearance.

Our Timber

We supply our timber coated with a water resistant, food-safe, non-toxic plant based oil containing only biologically and environmentally responsible ingredients. The timber is a mixed Australian hardwood including Red Ironbark, Spotted Gum and Forest Red Gum species.

Maintenance

In addition to the initial treatment applied prior to furniture assembly, it is important that a scheduled maintenance program is established to ensure the timber keeps its appearance for years to come.

Due to the extremely dense, fine grain of our hardwood timber, initial coatings of treatment only penetrate the upper layers of the timber. This may result in the original colour fading over a period of 3 months. We would recommend that within the first 3 months a second coat of the selected treatment is applied.

As the timber weathers over a period of time the natural grain will open up, allowing future treatments to penetrate even deeper into the timber, allowing maintenance frequencies to be reduced.

How to correctly apply oil

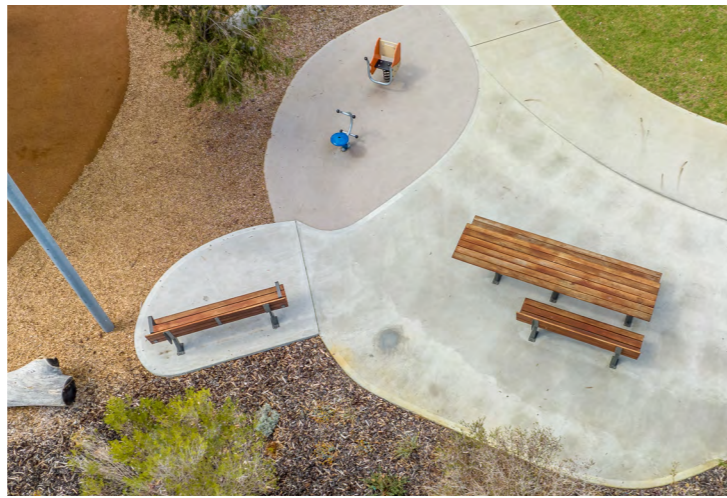
Before each application, the timber should be lightly sanded with a fine sanding block. The dust should be removed with a soft brush or cloth before applying the treatment.

Note _ Care should be taken when using strong chemical cleaners as this will also remove any surface treatment. When chemical cleaners have been used, the treatment should be reapplied immediately.

Example Program

- 01 _ First Onsite Application
3 months after the installation.
- 02 _ Second Onsite Application
6 months after the first application.
- 03 _ Ongoing Maintenance
every 12 months.





What is leaching?

Leaching occurs when moisture permeates the timber, releasing the natural tannins from the hardwood timber. It is most common in new timber products and is most visible as a brown stain, especially on concrete surfaces.

Though the timber is dried to industry standards in a kiln, this process can still occur, usually for the first 1 - 5 times of getting wet.

Can leaching be stopped?

Leaching cannot be stopped, but you can take preventative measures to minimise the damage to surfaces that may come in contact with the leaching process.

To reduce the impact of leaching, you can hose down the timber on a safe surface, such as a tarp or grass. For best results, we would recommend this process to be repeated 2 - 3 times.

How to clean unwanted leaching off surfaces?

If leaching has already occurred, it is crucial to clean this as soon as possible. Steel and powder coated surfaces can usually be wiped down with a warm, wet cloth. Concrete surfaces should be cleaned with an undiluted bleach* that is left to soak in for 20 minutes and then thoroughly washed away with warm water while scrubbing with a broom.

Note _ Test this in an inconspicuous area first.

BBQ Cleaning

Hotplate Cleaning

- 01 _ Turn the BBQ on and wait for the button light to turn green.
- 02 _ Pour water onto the hotplate once the light is green.
- 03 _ Wipe clean with paper towel or a rag. You can apply pressure onto your paper towel or rag with a pair of tongs. A soft scourer pad can be used for stubborn stains.

Cleaning Tea Stains

Tea staining is discolouration of the surface of stainless steel by corrosion. It is a cosmetic issue that does not effect the structural integrity, or the lifetime of the material.

To keep staining at bay, the BBQ cabinet needs to be washed regularly to clean off the salt particles that become airborne from the sea.

Preventative Measures _ Wash down stainless steel with warm soapy water regularly.

Cleaning Guide

- 01 _ Use a bleach-free, chalk-based cream cleanser. Rub that into the tea stains with a damp, soft cloth.
- 02 _ Wipe clean with water.

Note _ For stubborn stains, try a commercial stainless steel cleaner. If this does not work, you can use a synthetic pad. Always rub in the direction of the grain as the abrasive nature of pads can remove microscopic particles.



GX Outdoors