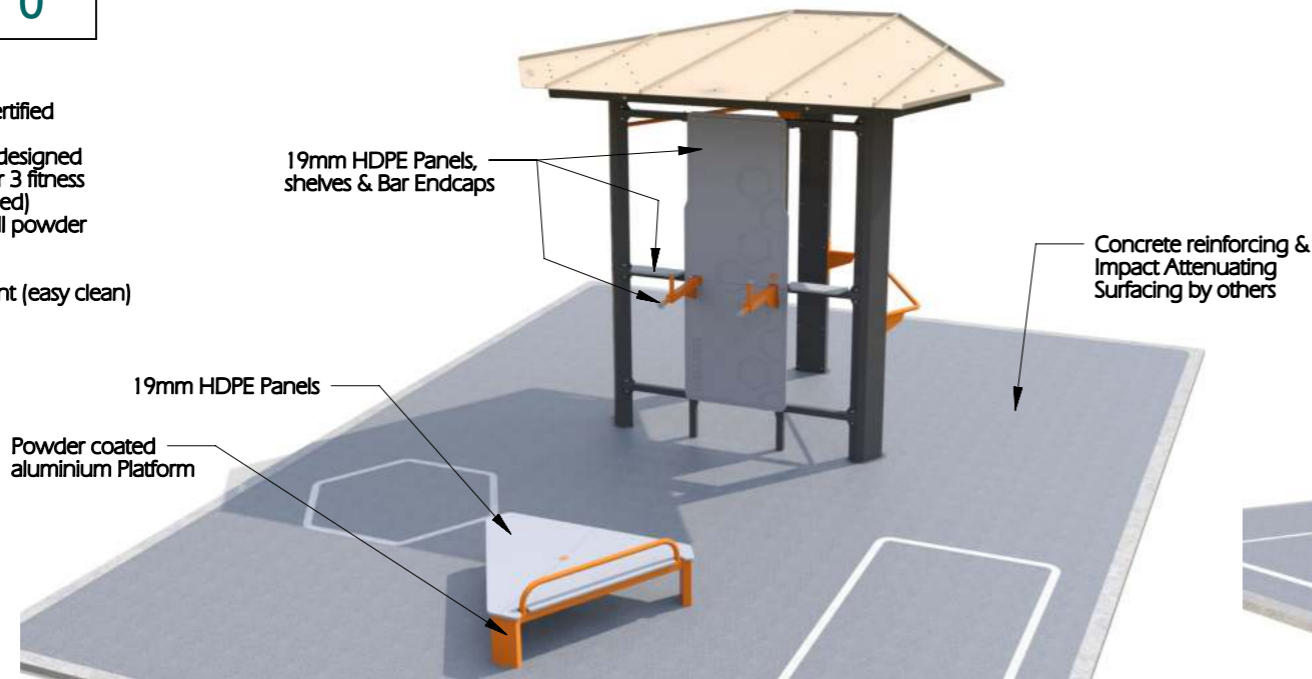
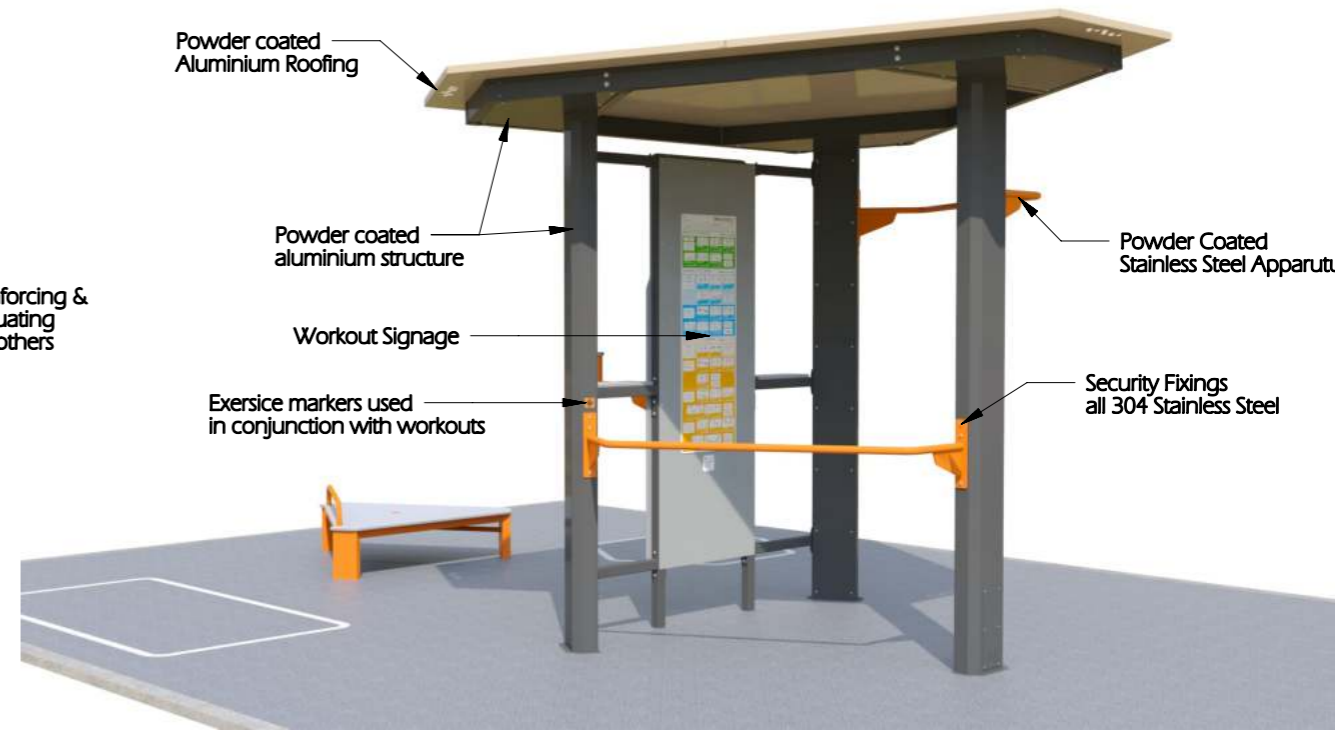


WELLCELL NOTES:

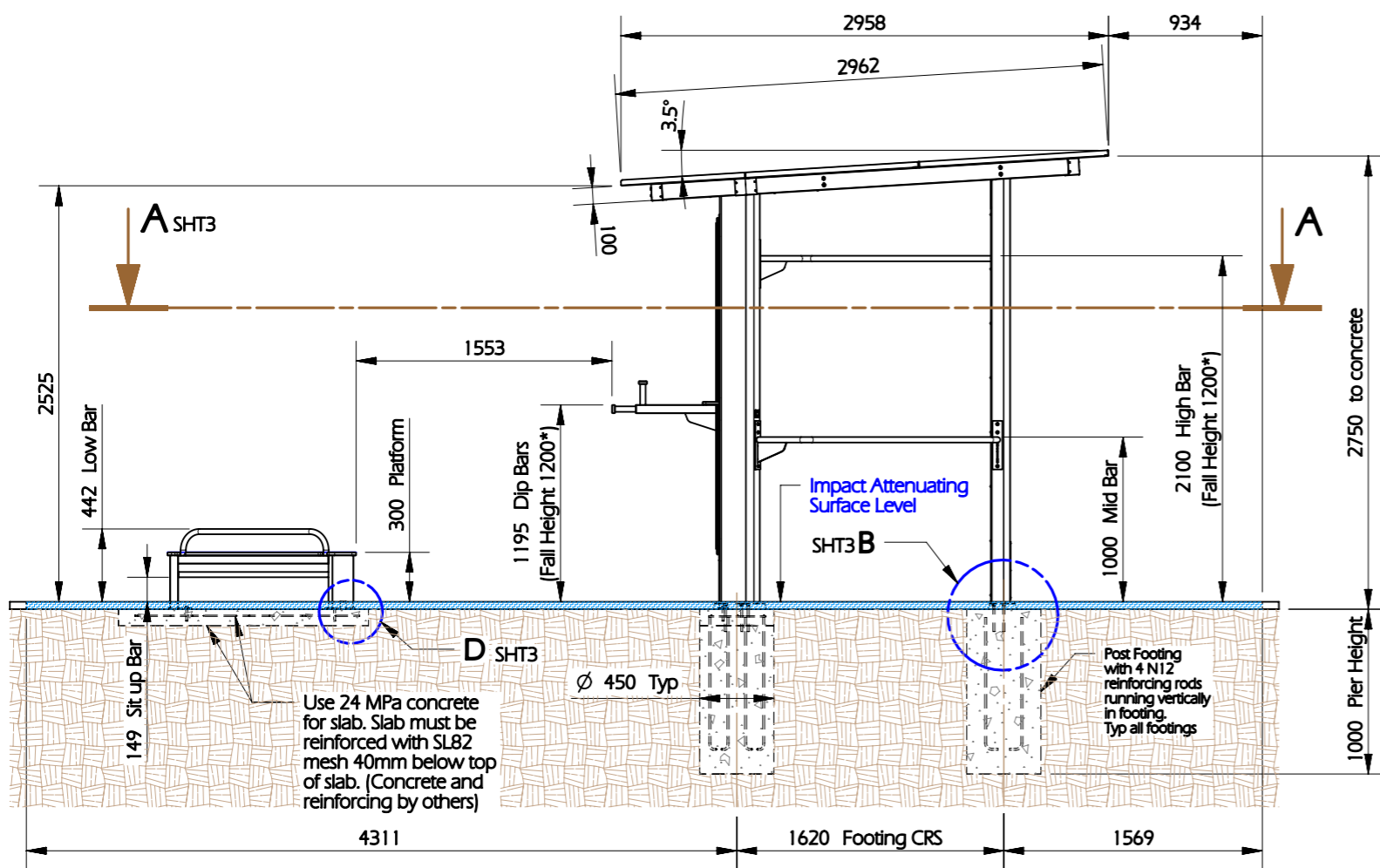
1. The WELLCELL has been designed and Certified to AS16630:2021
2. The WELLCELL comes with professionally designed workouts by a qualified personal trainer for 3 fitness levels (Beginner, Intermediate and Advanced)
3. The roof, shelter structure & Platform are all powder coated aluminium
4. All touch points are Powder coat Finish
5. HDPE panelling is moisture and UV resistant (easy clean)
6. Optional lighting / solar lighting available



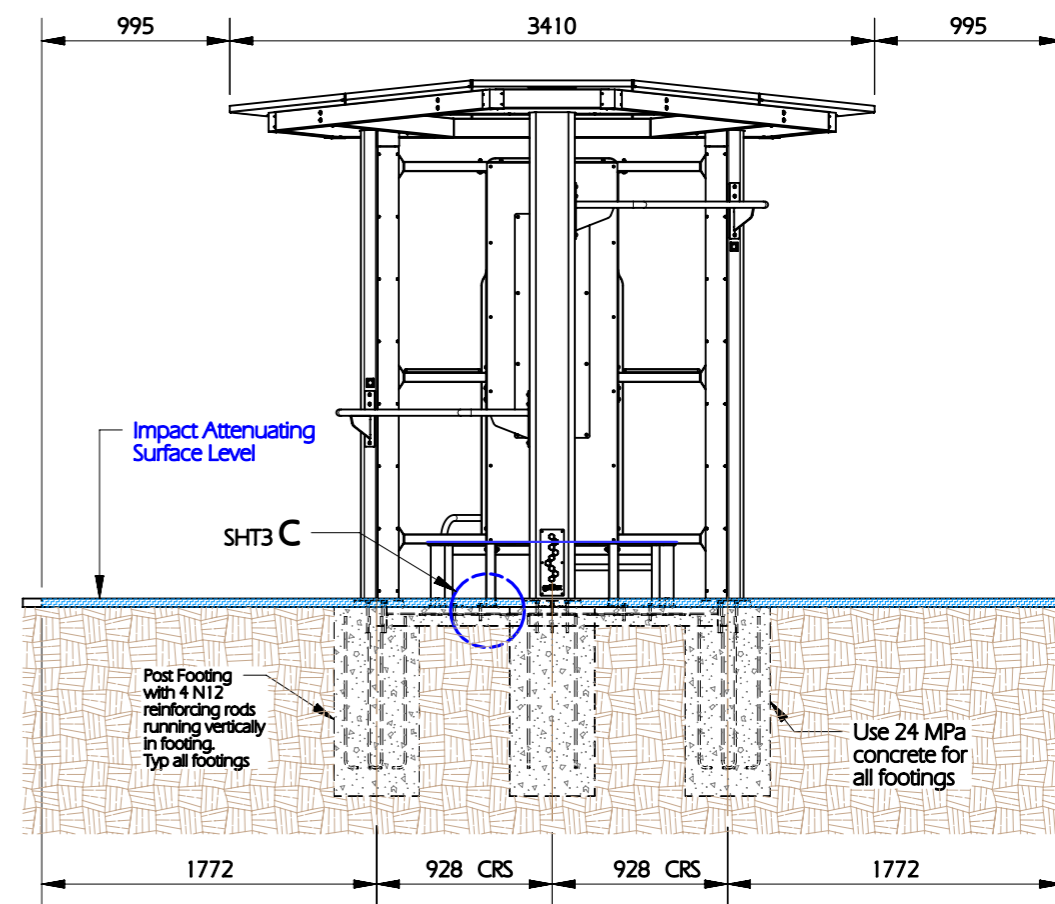
PICTORIAL VIEW - REAR



PICTORIAL VIEW - FRONT

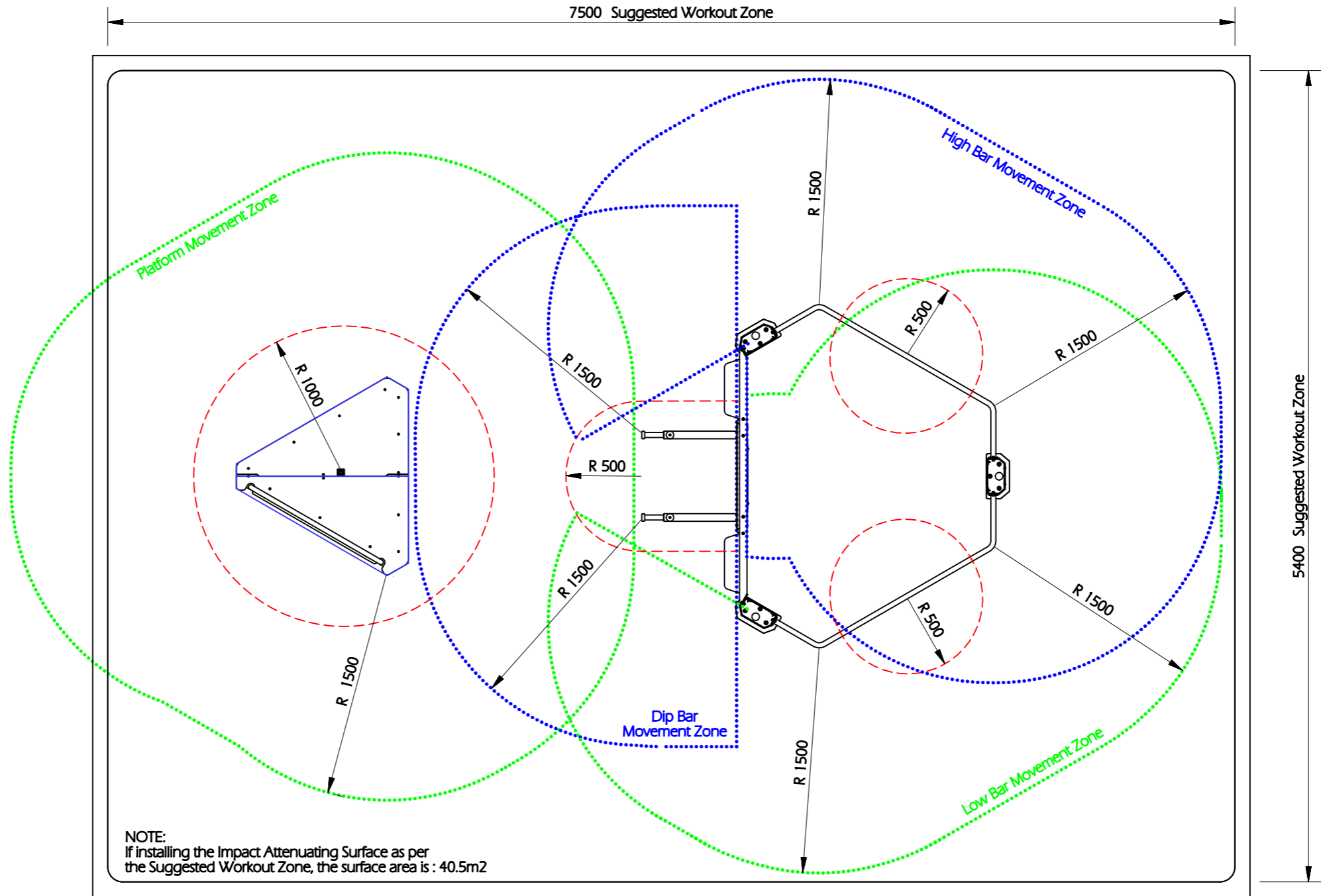


SIDE VIEW



ELEVATION

REV	DATE	BY	DESCRIPTION
0	25NOV22	BC	PRODUCT RELEASE



ZONES & IMPACT REQUIREMENTS

..... Movement Zone	Impact Attenuating Surface Requirements: To suit fall height of 1200mm*
..... Movement Zone	Impact Attenuating Surface Requirements: Not Required
----- Training Zone	Impact Attenuating Surface Requirements: Same as corresponding Movement Zone

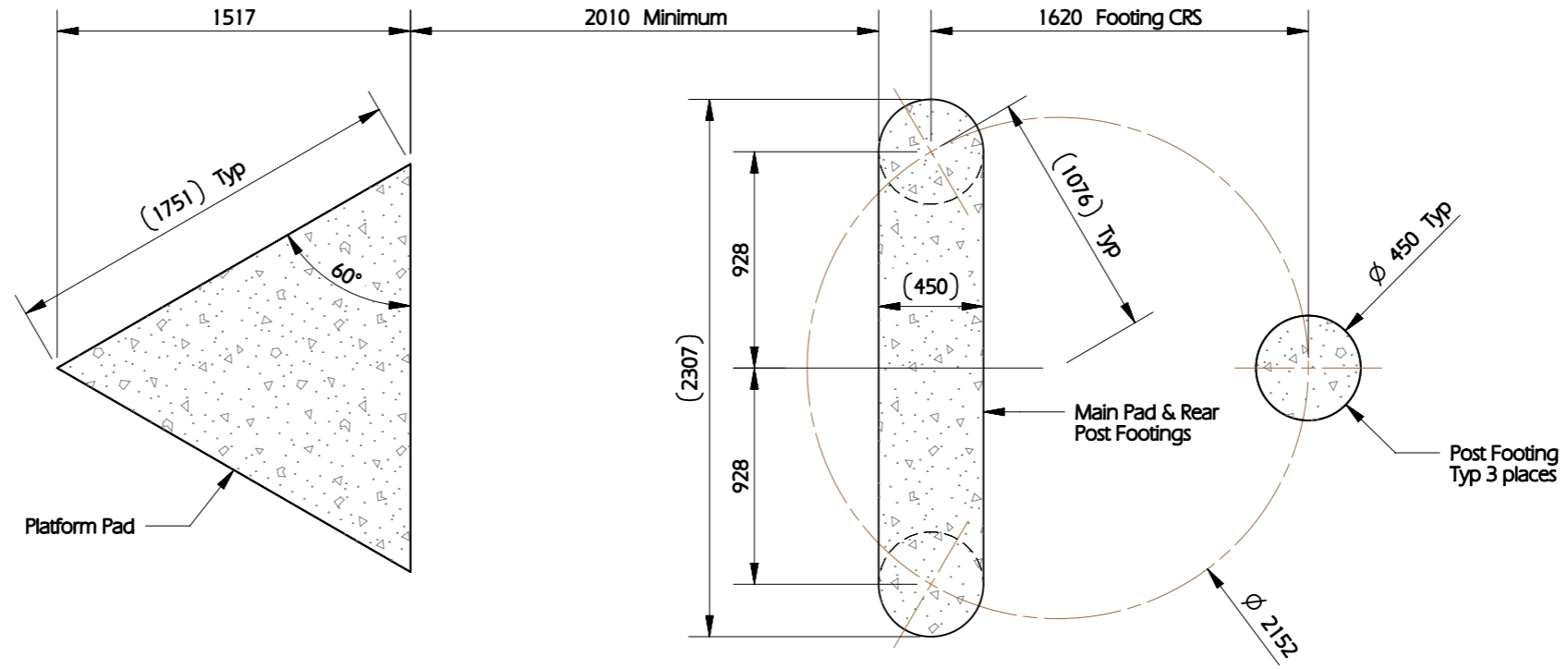
NOTE: Movement Zones that require impact attenuating surfacing supercede all other overlapping zones

REV	DATE	BY	DESCRIPTION
0	25NOV22	BC	PRODUCT RELEASE

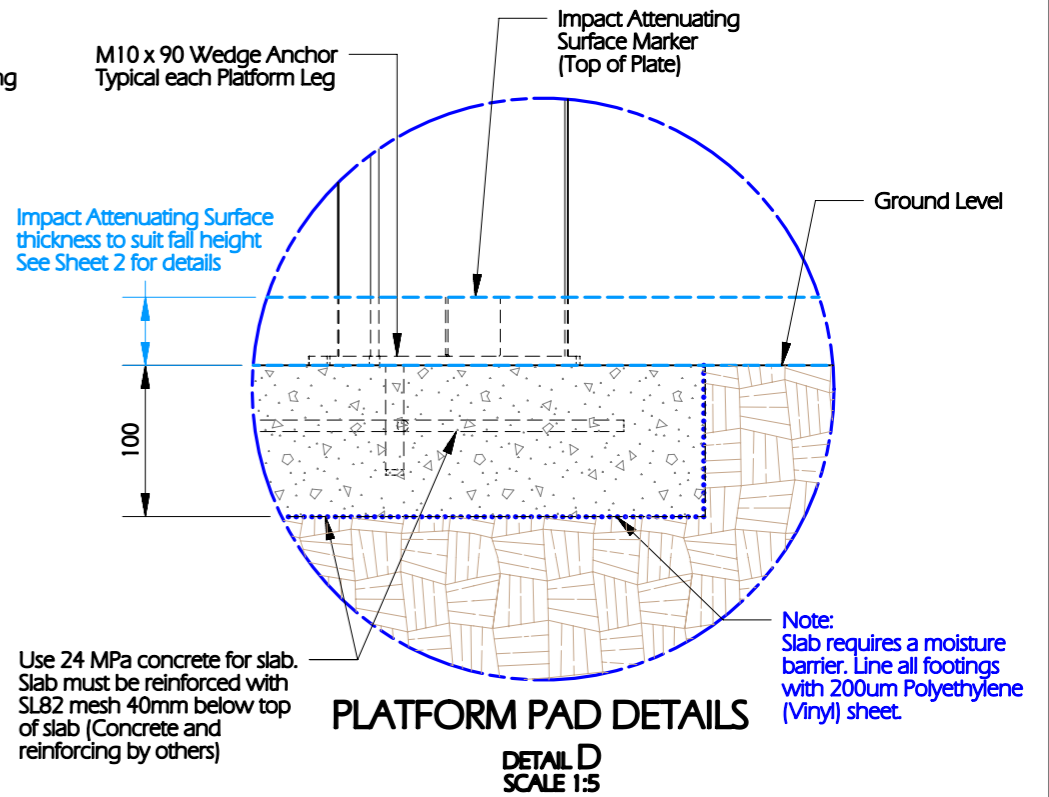
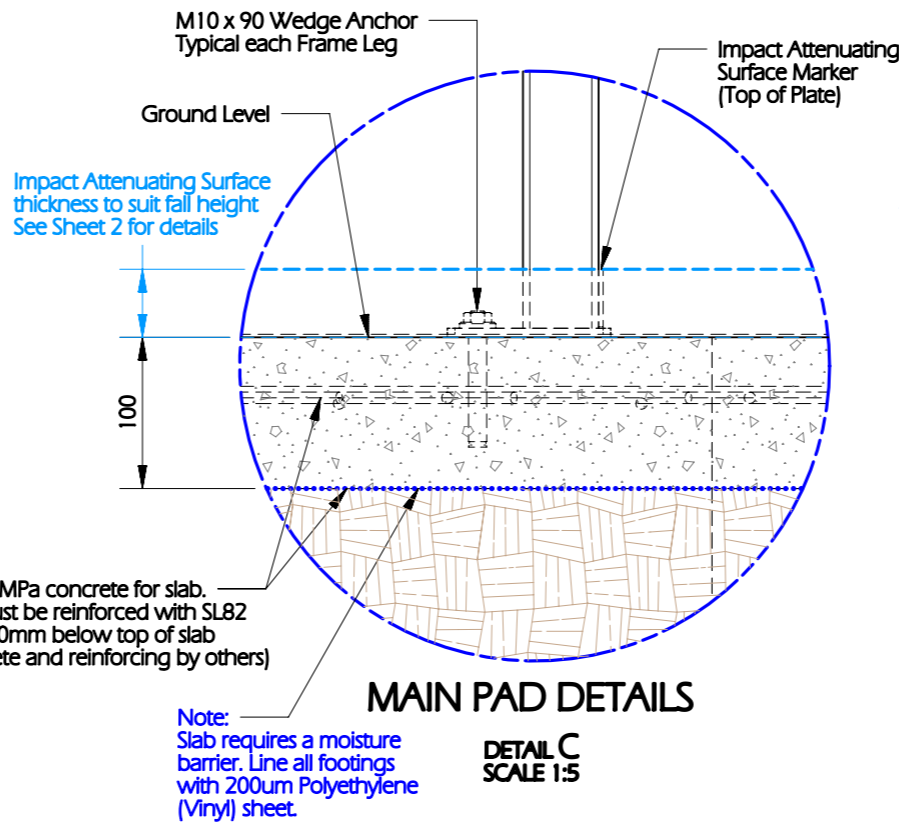
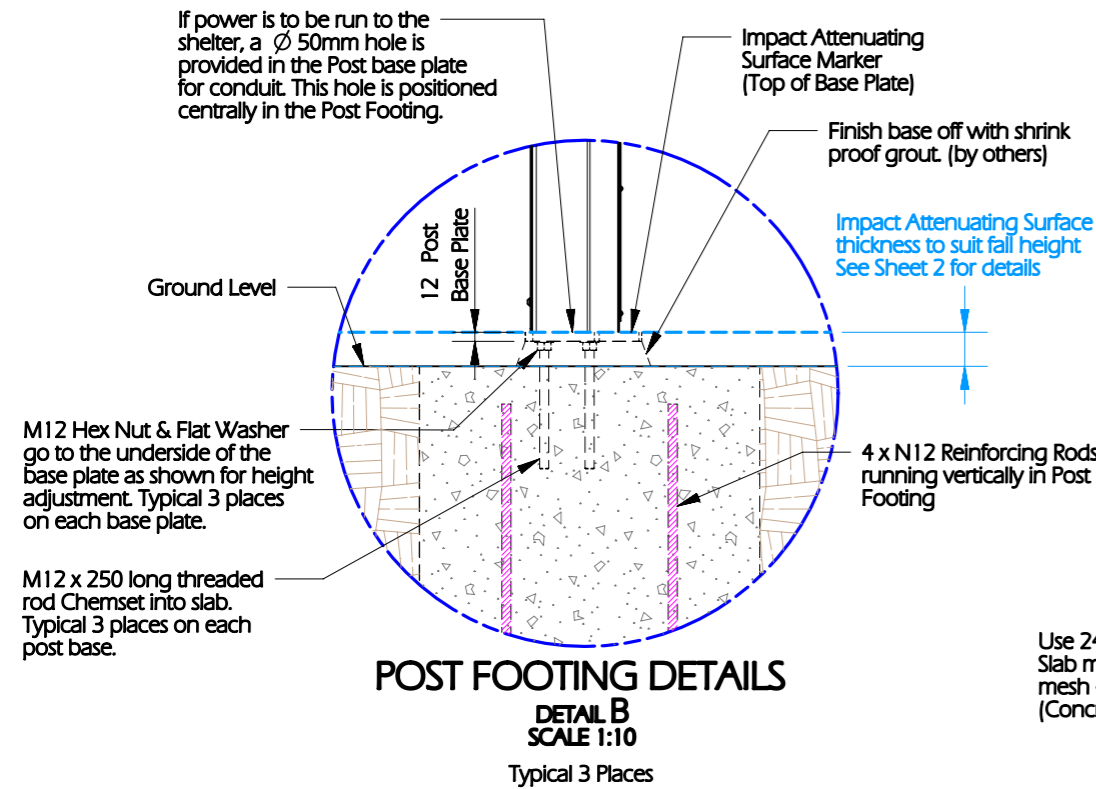
DRAWN: MH	SCALE: AS SHOWN	SHT 2 OF 3
DATE: 25NOV22		A3
DRAWING No.	REVISION	
WCL-SM-DEL-001-PD	0	

SLAB & IMPACT ATTENUATING SURFACE GENERAL NOTES:

1. Slab & reinforcing designed for soil Class "P"
2. Slab & trench footings to be lined with 200um Polyethylene (Vinyl) sheet (by others)
3. Compact subgrade to 95% and minimum bearing capacity of 100kPa.



FOOTING & SLAB DETAILS
SECTION A-A



ALL DIMENSIONS IN MM		REV	DATE	BY	DESCRIPTION
LINEAR TOLERANCE: X ± 1.0 XX ± 0.2 ANGULAR TOLERANCE: ALL ± 1.0°		0	25NOV22	BC	PRODUCT RELEASE
COPYRIGHT © THIS DRAWING IS THE PROPERTY OF GRILLEX PTY LTD FOR WHICH WE RESERVE ALL RIGHTS INCLUDING THOSE RELATING TO PATENTS OR REGISTERED DESIGNS. IT MUST NOT BE REPRODUCED OR USED OTHERWISE OR MADE AVAILABLE TO ANY THIRD PARTY WITHOUT PRIOR PERMISSION IN WRITING.					