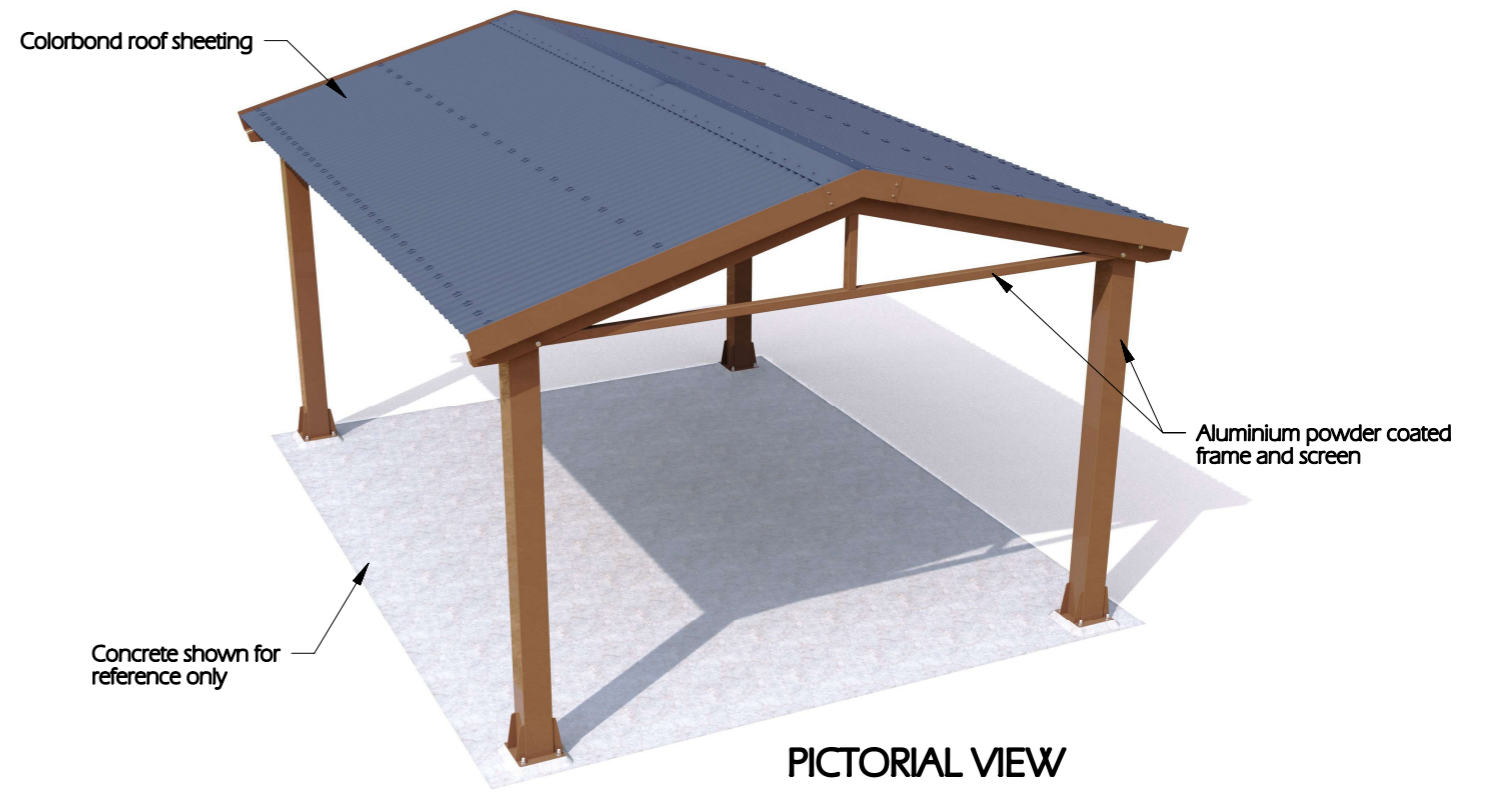
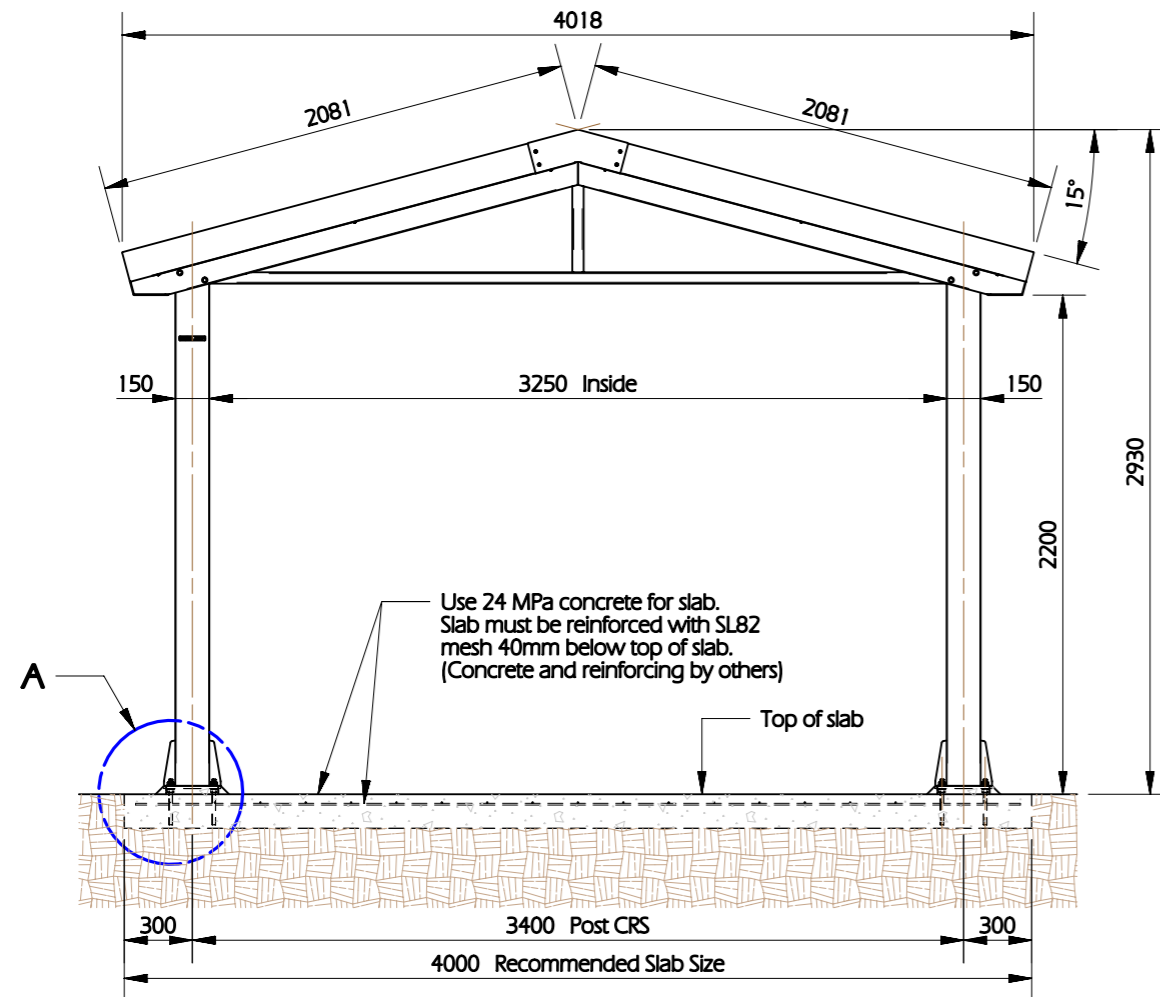


Note:  
Slab requires a moisture barrier. Line all footings with 200um polyethene (vinyl) sheet.

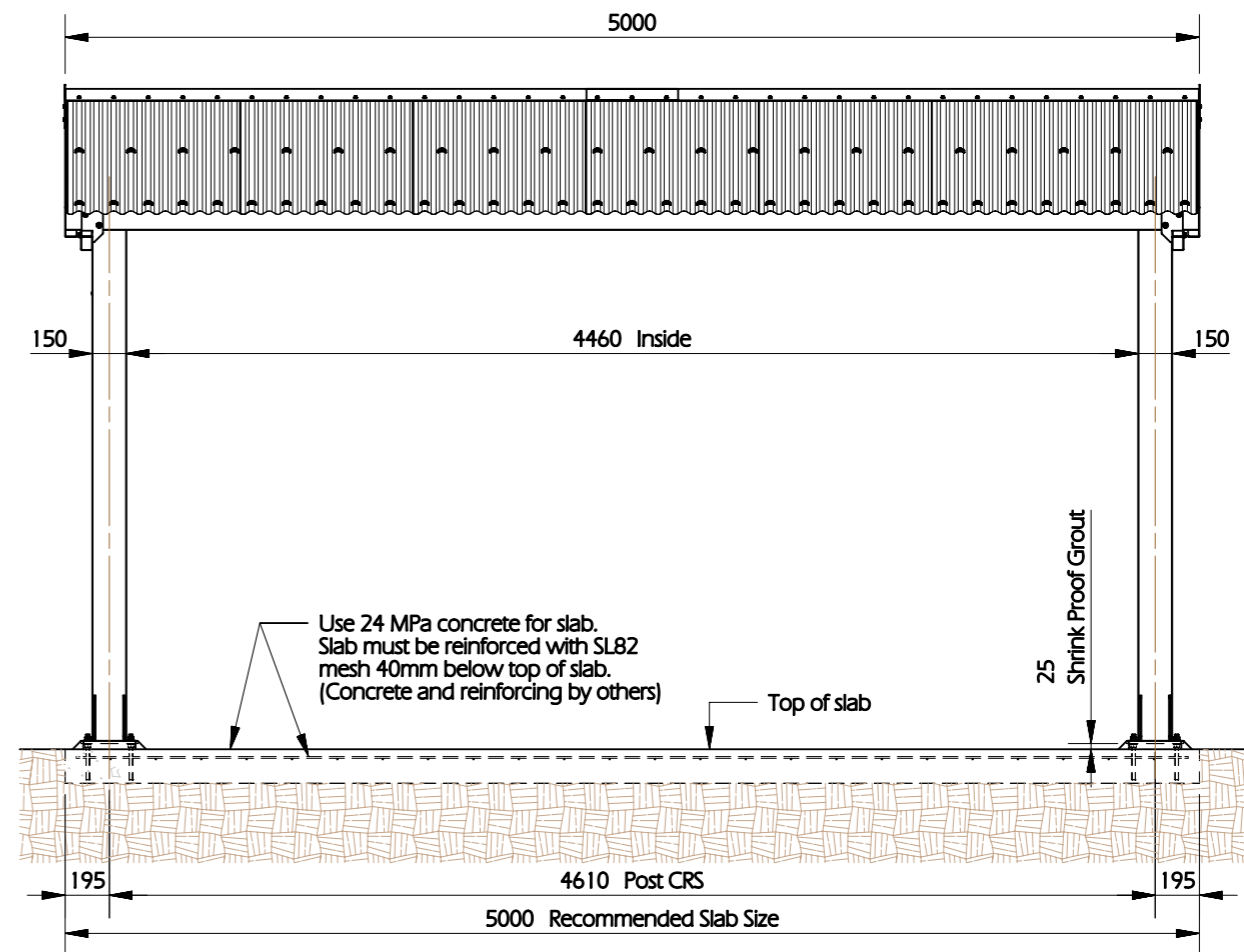
**DETAIL A**  
SCALE 1:10



**PICTORIAL VIEW**



**ELEVATION**  
SCALE: NTS



**SIDE VIEW**  
SCALE: NTS

Use 24 MPa concrete for slab.  
Slab must be reinforced with SL82 mesh 40mm below top of slab.  
(Concrete and reinforcing by others)

Use 24 MPa concrete for slab.  
Slab must be reinforced with SL82 mesh 40mm below top of slab.  
(Concrete and reinforcing by others)

**GENERAL NOTES:**

1. Slab & reinforcing designs for soil Class "P"
2. Slab & trench footings to be lined with 200um Polyethylene (Vinyl) sheet (by others)